



Amethyst glass Moser 'Amphora' Vase with gilded warrior frieze:  
the classical amphora panel-cut vase on circular foot; with broad gilded frieze of  
colour tinted classical figures depicting the clash of the Amazons on a foliate  
ground. Known as 'oroplastic' technique.

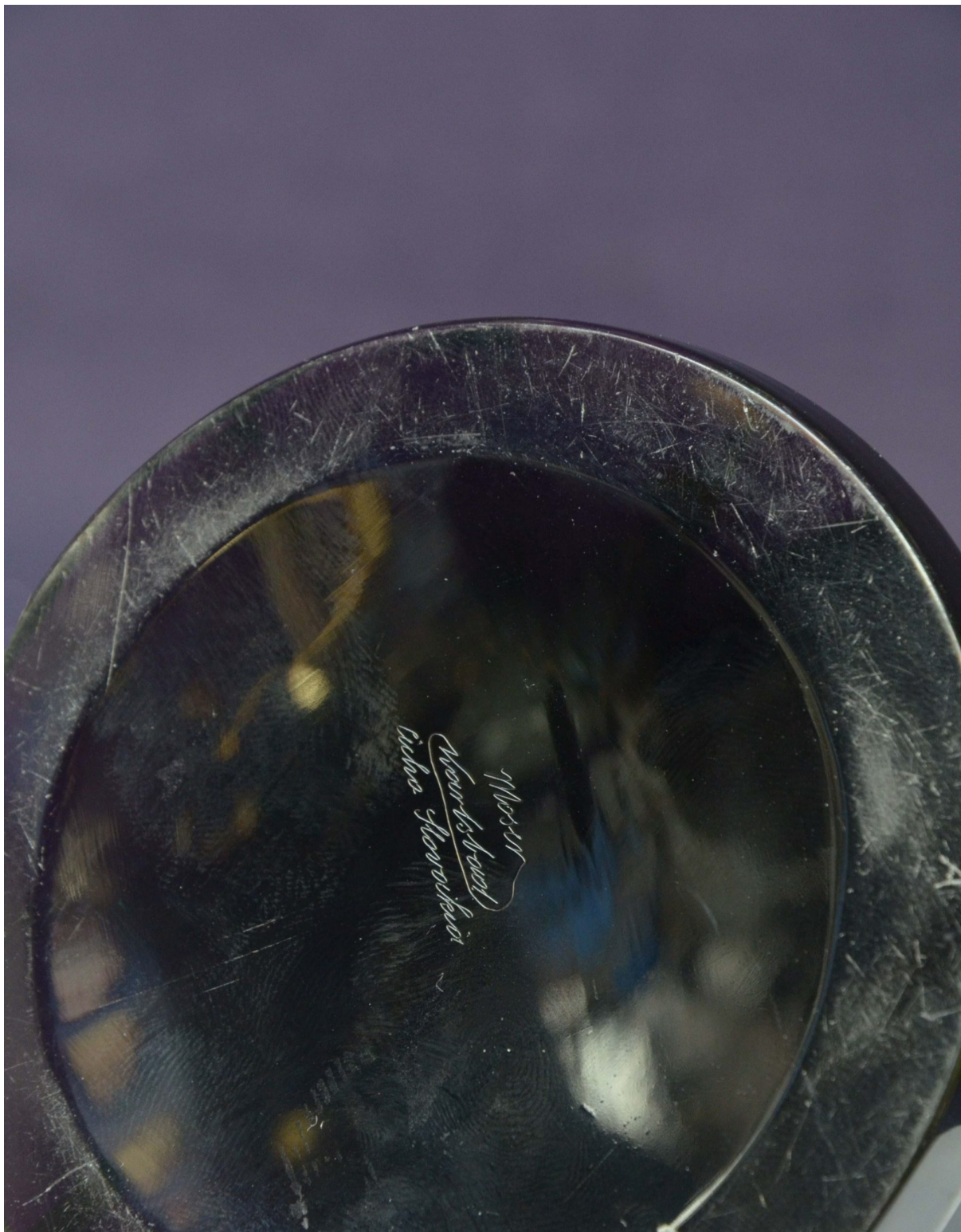
4948

Engraved maker's mark to base 'Moser' 'Karlsbad', circa 1917. Design by Josef  
Hoffmann.

See detail photo showing two similar vases ref.4156 and 5073.

Height: 10½" - 26.5cm

Width: 5" - 12.5cm



Amethyst glass Moser 'Amphora' Vase with gilded warrior frieze

4948b





Amethyst glass Moser 'Amphora' Vase with gilded warrior frieze

4948c